

# CEDRENE 10

6 Bedrooms - 5 Bathrooms – Sleeps 10 + 2



## Property Description

A luxury 6 bedroom chalet positioned by the Place Centrale in Verbier, boasting 320m<sup>2</sup> of alpine living space, finished in new oak, natural stone and quality fittings. Cedrene is a private chalet retreat, perfectly orientated with an ideal sun-trap and offering panoramic views of the mountains and ski area. The property comfortably accommodates 10 guests and can accommodate 12. There are five double en suite bedrooms and a small twin room with separate shower room.

The chalet has a main entrance with vestiaire and also an internal ski room entrance via the garage.

On the entrance level of the chalet is a delightful living and dining area with exterior terrace & decking. There is also a separate kitchen, separate guest toilet and a master bedroom with en suite spa bath.

The upper living level has 3 double bedrooms each with en-suites, another 2 bedrooms well suited for children or a nanny as well as a separate toilet.

The ground floor has a separate entrance via a private double garage and ski room.

The chalet also has an exterior parking area and the central location is convenient for walking across to the main ski station and ideal to access the resorts high street shopping and restaurants.

## Property Layout

### Top Floor



1 Double Bedroom with Ensuite Shower room

### 1st Floor



2 Double Bedrooms with Ensuite Bath / Shower room



Double with ensuite shower room



Twin Bedroom









Single Bed with shower




Separate WC

## Entrance Floor

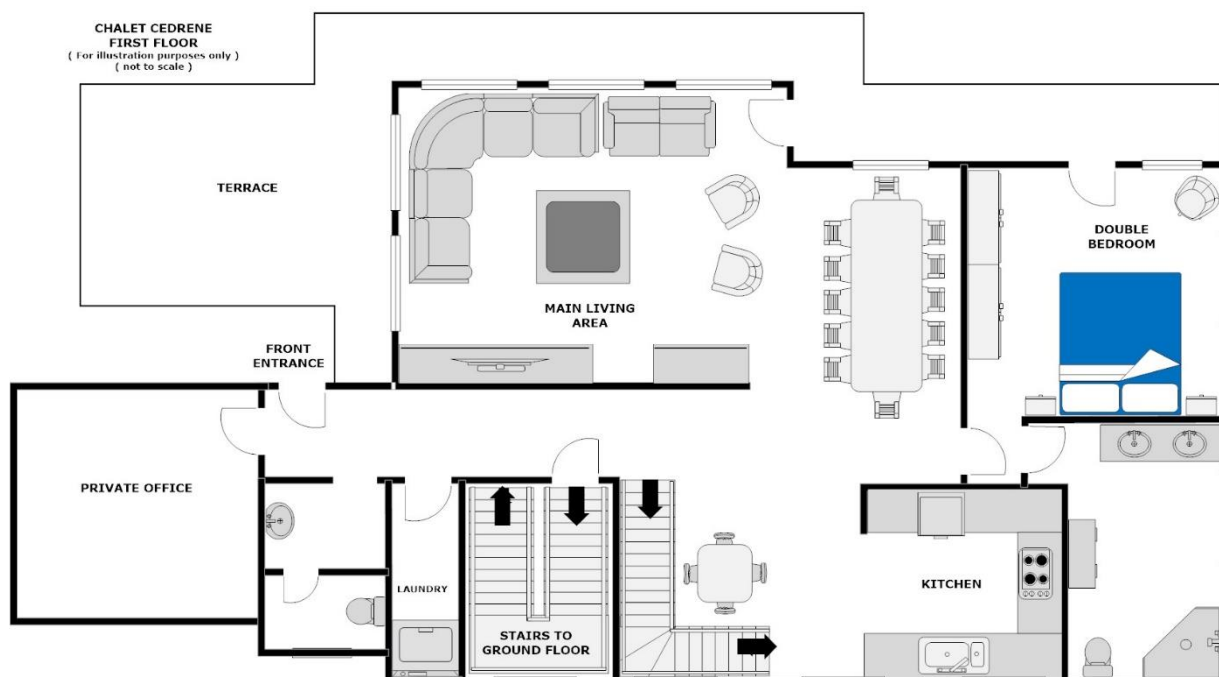
-   
Main entrance with vestiare
-   
Double Bedroom with ensuite Bath / Shower room
-   
Open plan living / dining area
-   
Separate kitchen
-   
Guest WC
-   
South facing sun terrace

## Ground Floor

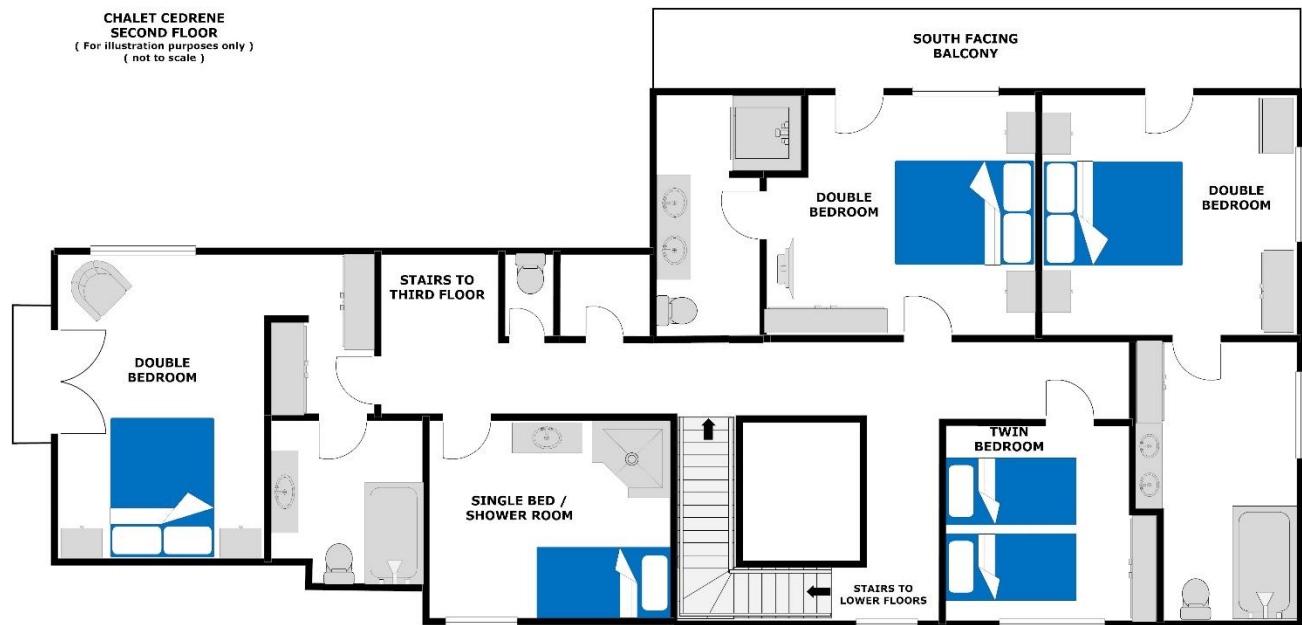
-   
Garage entrance with ski room

## Property Floorplans

### First Floor

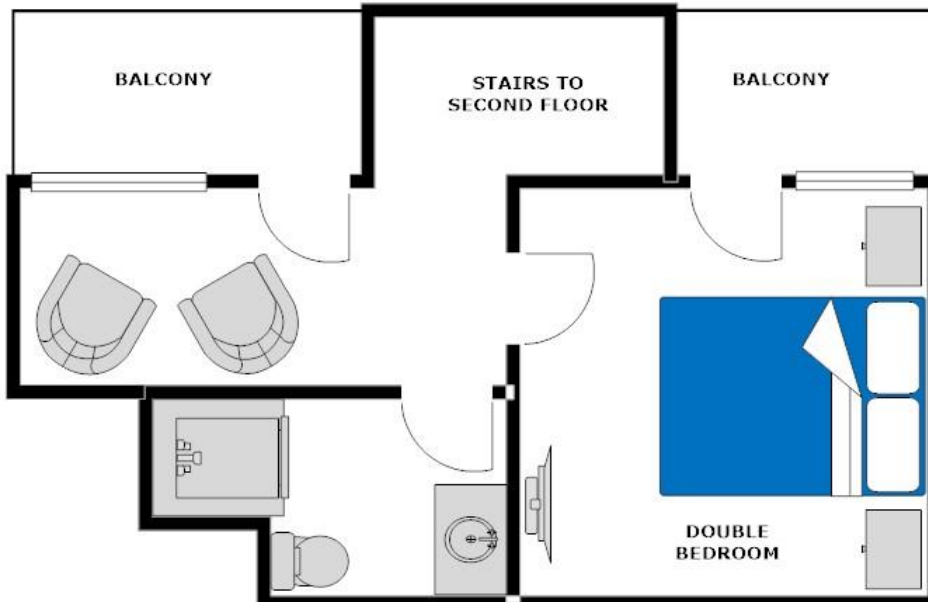


## Second Floor



## Third Floor

**CHALET CEDRENE  
THIRD FLOOR**  
( For illustration purposes only )  
( not to scale )







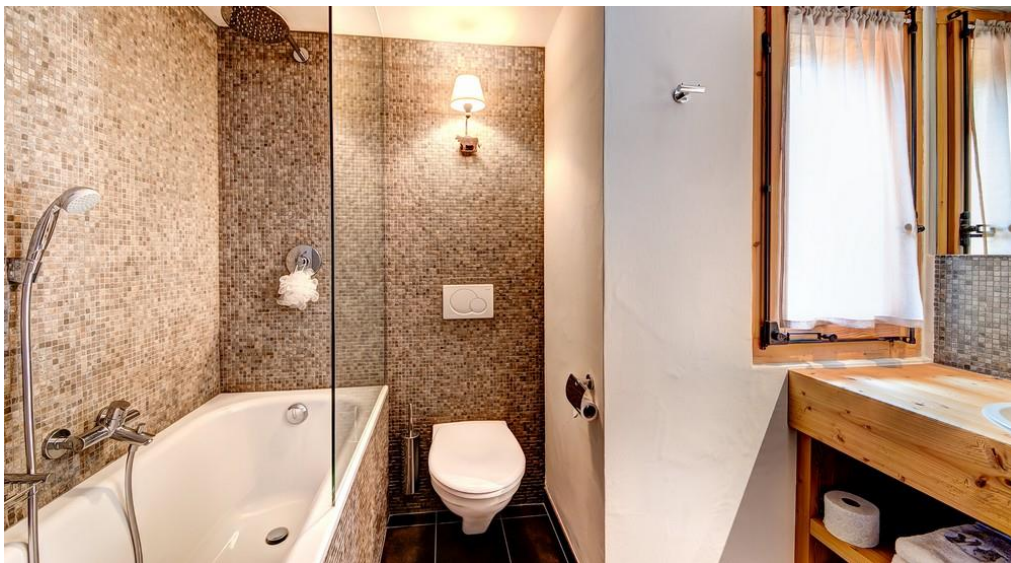
















GPS 46.097932, 7.227494

